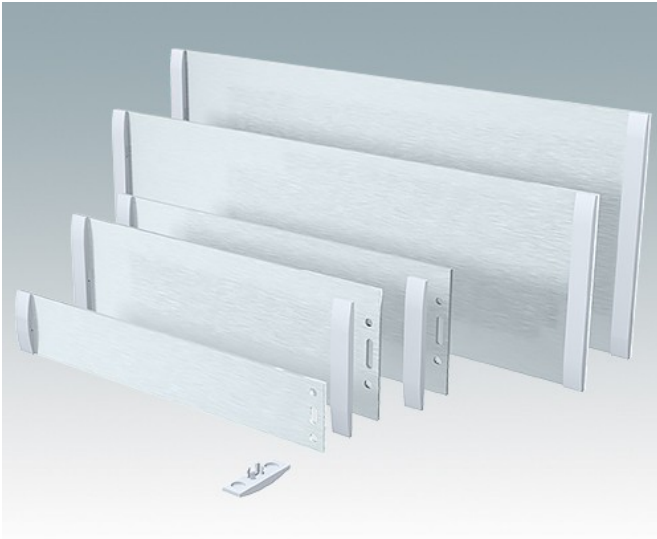
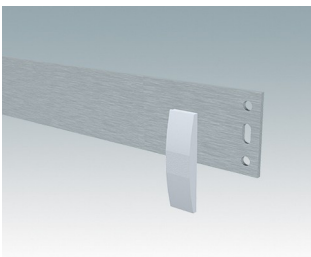


- Frontplatten-Sets aus eloxiertem Aluminium für Unimet-/Unimet-Plus-Gehäuse.
- In kundenspezifischen Ausführungen mit Löchern und Digitaldruck lieferbar
- Ersatz-Abdeckstreifen
- Frontplatten und Abdeckstreifen

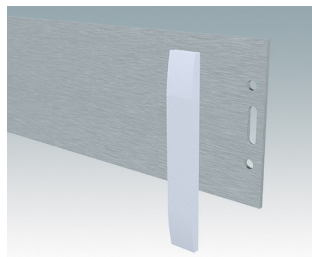
Bestellen Sie Ihre eigene kundenspezifische Version. [Hier erfahren Sie mehr >>](#)



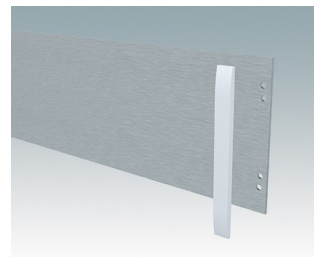
Versionen



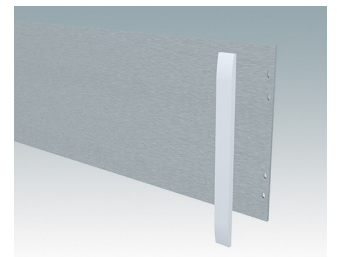
M5700020
Abdeckstreifen 1/1H/1HE
ABS (UL 94 HB)
Lichtgrau RAL 7035



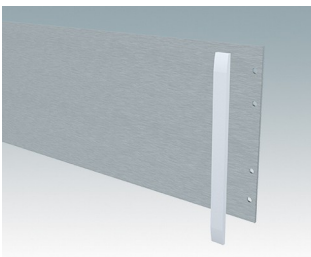
M5700021
Abdeckstreifen 2/2H/3/3H/2HE
ABS (UL 94 HB)
Lichtgrau RAL 7035



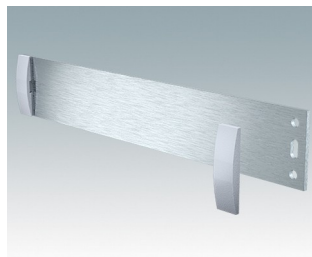
M5700022
Abdeckstreifen 4/4H
ABS (UL 94 HB)
Lichtgrau RAL 7035



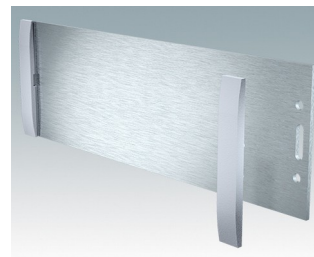
M5700023
Abdeckstreifen 3HE
ABS (UL 94 HB)
Lichtgrau RAL 7035



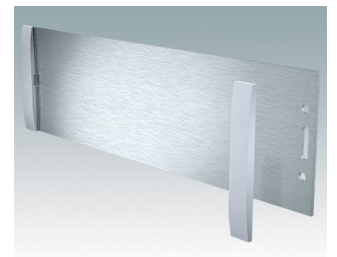
M5700024
Abdeckstreifen 5/5H/6/6H
ABS (UL 94 HB)
Lichtgrau RAL 7035



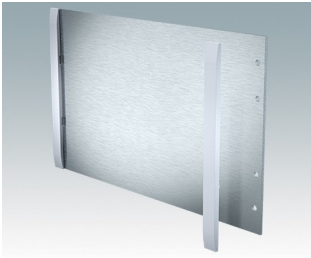
M5700607
Frontplatten-Set (1/1H)
Aluminium
Matt eloxiert
199.5x2x33.6mm



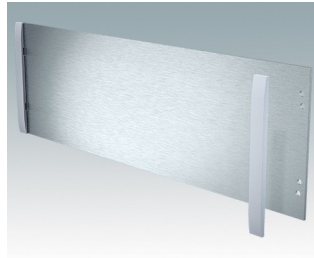
M5700608
Frontplatten-Set (2/2H)
Aluminium
Matt eloxiert
199.5x2x65.1mm



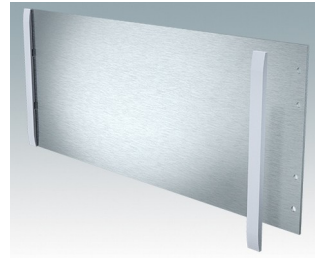
M5700613
Frontplatten-Set (3/3H)
Aluminium
Matt eloxiert
219.5x2x65.1mm



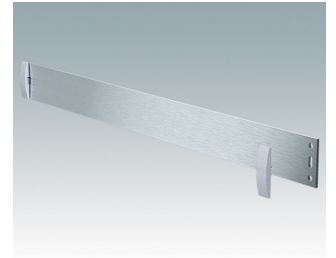
M5700616
Frontplatten-Set (5/5H)
Aluminium
Matt eloxiert
219.5x2x130.1mm



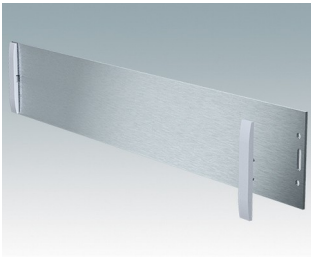
M5700620
Frontplatten-Set (4/4H)
Aluminium
Matt eloxiert
319.5x2x100.1mm



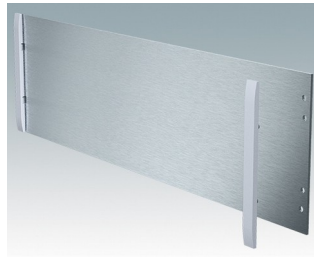
M5700621
Frontplatten-Set (6/6H)
Aluminium
Matt eloxiert
319.5x2x130.1mm



M5900010
Frontplatten-Set (1HE)
Aluminium
Matt eloxiert
392.5x2x33.6mm



M5900020
Frontplatten-Set (2HE)
Aluminium
Matt eloxiert
392.5x2x67.1mm



M5900030
Frontplatten-Set (3HE)
Aluminium
Matt eloxiert
392.5x2x111mm

Technische Änderungen vorbehalten. © OKW Enclosures Ltd